

# Midland National Life Ins Co

**Group Affiliation:** Sammons Financial Group  
**Address:** 4350 Westown Parkway  
 West Des Moines IA 50266  
**Phone:** 605-335-5700

**Domicile:** IA  
**NAIC Number:** 66044  
**Year Established:** 1906  
**Company Type:** Stock

## Ratings

A.M. Best Company(Best's Rating, 15 ratings) A+ (2)  
 Standard & Poor's(Fin. Strength, 20 ratings) A+ (5)  
 Fitch Ratings(Fin. Strength, 21 ratings) A+  
 Weiss(Safety Rating, 16 ratings) B+ (4)  
 Comdex Ranking(Percentile in Rated Companies) 88

## Assets & Liabilities

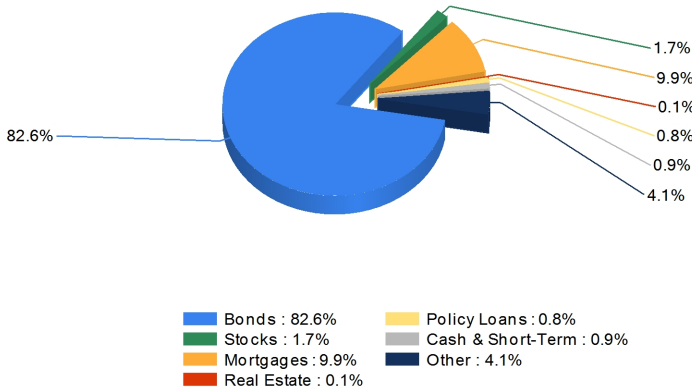
Total Admitted Assets 51,098,306  
 Total Liabilities 47,999,181  
 Separate Accounts 4,161,021  
 Total Surplus & AVR 3,488,767  
 As % of General Account Assets 7.4%

## Invested Asset Distribution

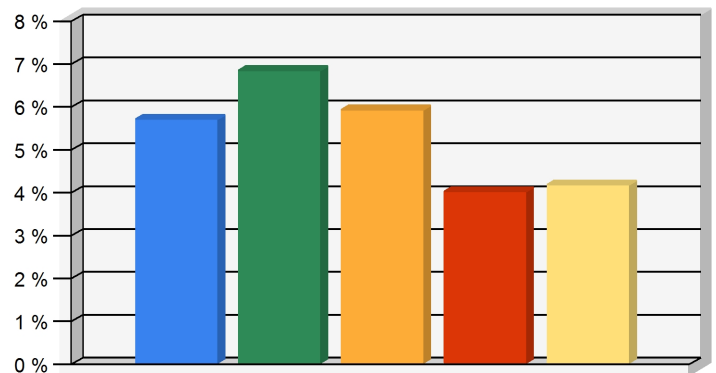
Total Invested Assets 46,055,444

## 5 Year Investment Yields

5 Year Average 5.32%



Distribution of the invested assets



Net yield on mean invested assets

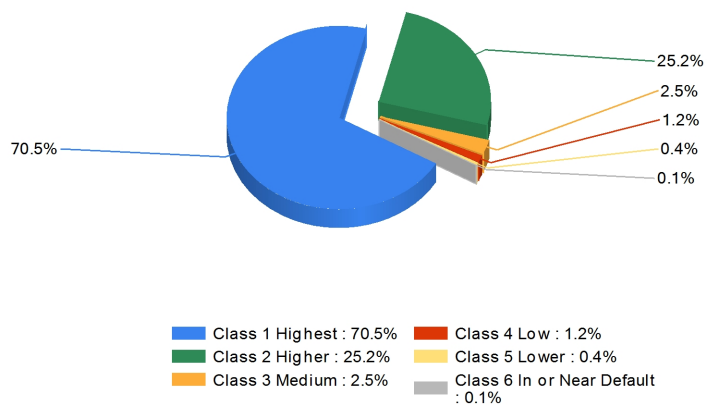
## Non-Performing Assets

Bonds In or Near Default 1.1%  
 Problem Mortgages 0.0%  
 Real Estate Acquired by Foreclosure 0.0%  
 Total Non-Performing Assets/Surplus & AVR 1.1%  
 As a Percent of Invested Assets 0.1%

## Income & Earnings

Total Income 8,631,531  
 Net Premiums Written 4,954,402  
 Earnings Before Dividends and Taxes 720,275  
 Net Operating Earnings 512,412

## Bond Quality



Distribution of bond classes

A Best's Financial Strength Rating opinion addresses the relative ability of an insurer to meet its ongoing insurance obligations. It is not a warranty of a company's financial strength and ability to meet its obligations to policyholders. View our Important Notice: Best's Credit Ratings for a disclaimer notice and complete details at <http://www.ambest.com/ratings/notice>.

Data for Year-End 2016 from the life insurance companies' statutory annual statements. All dollar amounts are in thousands. All ratings shown are current as of August 11, 2017.

Presented by: Rhonda Lewis, Annuity Marketing Services, 3368 Brentwood Dr, 3368 Brentwood Dr, Baton Rouge, LA 70809 Phone: 225-930-0315 Email: [missy.cobb@annuitymarketing.com](mailto:missy.cobb@annuitymarketing.com)