

# American Equity Invest Life

**Group Affiliation:** American Equity Investment Grp  
**Address:** P.O. Box 71216  
 Des Moines IA 50325  
**Phone:** 515-221-0002

**Domicile:** IA  
**NAIC Number:** 92738  
**Year Established:** 1980  
**Company Type:** Stock

## Ratings

A.M. Best Company(Best's Rating, 15 ratings) A- (4)  
 Standard & Poor's(Fin. Strength, 20 ratings) A- (7)  
 Fitch Ratings(Fin. Strength, 21 ratings) A- (7)  
 Weiss(Safety Rating, 16 ratings) B- (6)  
 Comdex Ranking(Percentile in Rated Companies) 60

## Assets & Liabilities

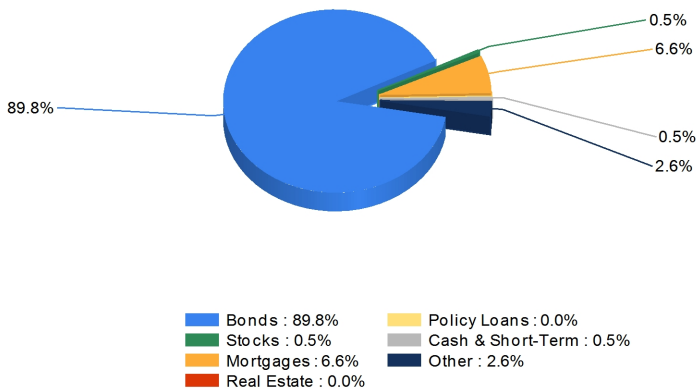
Total Admitted Assets 53,705,158  
 Total Liabilities 50,453,277  
 Separate Accounts 0  
 Total Surplus & AVR 3,536,589  
 As % of General Account Assets 6.6%

## Invested Asset Distribution

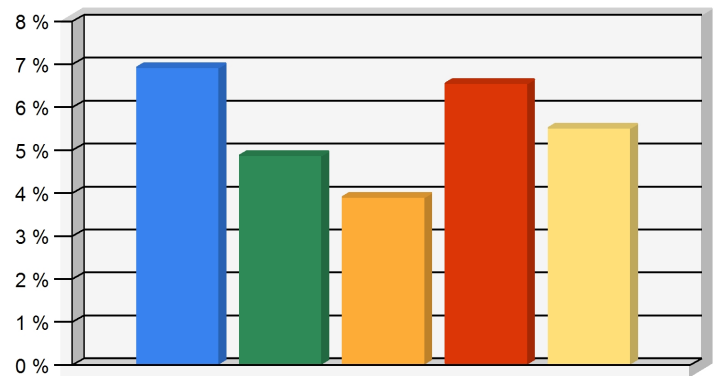
Total Invested Assets 52,791,680

## 5 Year Investment Yields

5 Year Average 5.53%



Distribution of the invested assets



Net yield on mean invested assets

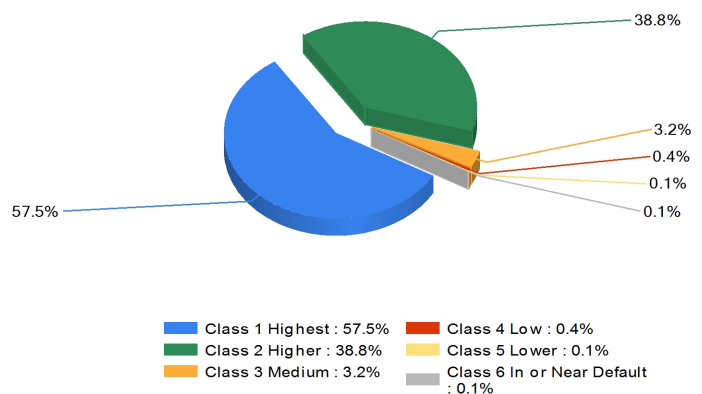
## Non-Performing Assets

Bonds In or Near Default 1.3%  
 Problem Mortgages 0.0%  
 Real Estate Acquired by Foreclosure 0.0%  
 Total Non-Performing Assets/Surplus & AVR 1.3%  
 As a Percent of Invested Assets 0.1%

## Income & Earnings

Total Income 6,643,776  
 Net Premiums Written 3,520,849  
 Earnings Before Dividends and Taxes 353,824  
 Net Operating Earnings 228,485

## Bond Quality



Distribution of bond classes

A Best's Financial Strength Rating opinion addresses the relative ability of an insurer to meet its ongoing insurance obligations. It is not a warranty of a company's financial strength and ability to meet its obligations to policyholders. View our Important Notice: Best's Credit Ratings for a disclaimer notice and complete details at <http://www.ambest.com/ratings/notice>.

Data for Year-End 2018 from the life insurance companies' statutory annual statements. All dollar amounts are in thousands. All ratings shown are current as of December 16, 2019.

Presented by: Rhonda Lewis, Annuity Marketing Services, 3368 Brentwood Dr, 3368 Brentwood Dr, Baton Rouge, LA 70809 Phone: 225-930-0315 Email: [missy.cobb@annuitymarketing.com](mailto:missy.cobb@annuitymarketing.com)

## List of Possible Ratings

	<b>A.M.Best</b>	<b>Standard &amp; Poor's</b>	<b>Moody's</b>	<b>Fitch Ratings</b>	<b>Weiss</b>
1.	A++ Superior	AAA Extremely Strong	Aaa Exceptional	AAA Exceptionally Strong	A+ Excellent
2.	A+ Superior	AA+ Very Strong	Aa1 Excellent	AA+ Very Strong	A Excellent
3.	A Excellent	AA Very Strong	Aa2 Excellent	AA Very Strong	A- Excellent
4.	A- Excellent	AA- Very Strong	Aa3 Excellent	AA- Very Strong	B+ Good
5.	B++ Very Good	A+ Strong	A1 Good	A+ Strong	B Good
6.	B+ Good	A Strong	A2 Good	A Strong	B Good
7.	B Fair	A- Strong	A3 Good	A- Strong	C+ Fair
8.	B- Fair	BBB+ Good	Baa1 Adequate	BBB+ Good	C Fair
9.	C++ Marginal	BBB Good	Baa2 Adequate	BBB Good	C- Fair
10.	C+ Marginal	BBB- Good	Baa3 Adequate	BBB- Good	D+ Weak
11.	C Weak	BB+ Marginal	Ba1 Questionable	BB+ Moderately Weak	D Weak
12.	C- DWeak	BB Marginal	Ba2 Questionable	BB Moderately Weak	D- Weak
13.	D Poor	BB- Marginal	Ba3 Questionable	BB- Moderately Weak	E+ Very Weak
14.	E Under State Supervision	B+ Weak	B1 Poor	B+ Weak	E Very Weak
15.	F In Liquidation	B Weak	B2 Poor	B Weak	E- Very Weak
16.		B- Weak	B3 Poor	B- Weak	F Failed
17.		CCC+ Very Weak	Caa1 Very Poor	CCC+ Very Weak	
18.		CCC Very Weak	Caa2 Very Poor	CCC Very Weak	
19.		CCC- Very Weak	Caa3 Very Poor	CCC- Very Weak	
20.		CC Extremely Weak	Ca Extremely Poor	CC Extremely Weak	
21.			C Lowest	C Distressed	