

Allianz Life Ins Co N America

Group Affiliation: Allianz Life Insurance Group
Address: 5701 Golden Hills Drive
 Minneapolis MN 55416-1297
Phone: 763-765-6500

Domicile: MN
NAIC Number: 90611
Year Established: 1979
Company Type: Stock

Ratings

A.M. Best Company(Best's Rating, 15 ratings) A+ (2)
 Standard & Poor's(Fin. Strength, 20 ratings) AA (3)
 Moody's(Fin. Strength, 21 ratings) A2 (6)
 Weiss(Safety Rating, 16 ratings) B (5)
 Comdex Ranking(Percentile in Rated Companies) 91

Assets & Liabilities

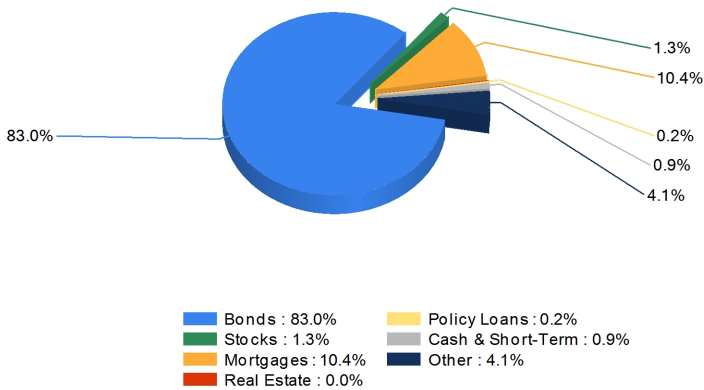
Total Admitted Assets 127,557,708
 Total Liabilities 121,392,428
 Separate Accounts 26,070,625
 Total Surplus & AVR 6,782,848
 As % of General Account Assets 6.7%

Invested Asset Distribution

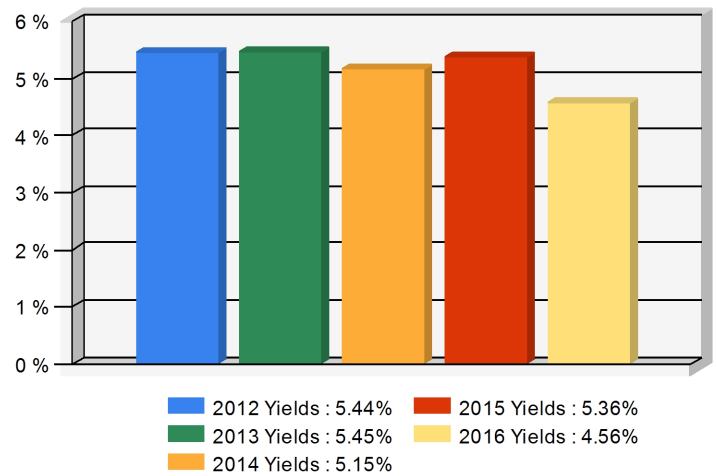
Total Invested Assets 99,839,608

5 Year Investment Yields

5 Year Average 5.19%



Distribution of the invested assets



Net yield on mean invested assets

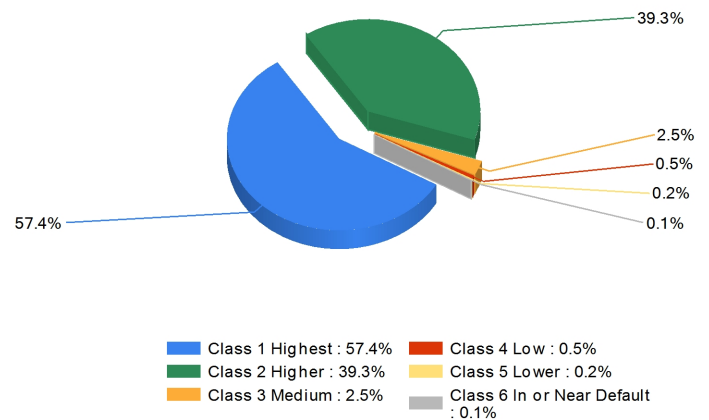
Non-Performing Assets

Bonds In or Near Default 1.4%
 Problem Mortgages 0.0%
 Real Estate Acquired by Foreclosure 0.0%
 Total Non-Performing Assets/Surplus & AVR 1.4%
 As a Percent of Invested Assets 0.1%

Income & Earnings

Total Income 18,337,157
 Net Premiums Written 12,642,917
 Earnings Before Dividends and Taxes 2,027,522
 Net Operating Earnings 1,497,192

Bond Quality



Distribution of bond classes

A Best's Financial Strength Rating opinion addresses the relative ability of an insurer to meet its ongoing insurance obligations. It is not a warranty of a company's financial strength and ability to meet its obligations to policyholders. View our Important Notice: Best's Credit Ratings for a disclaimer notice and complete details at <http://www.ambest.com/ratings/notice>.

Data for Year-End 2016 from the life insurance companies' statutory annual statements. All dollar amounts are in thousands. All ratings shown are current as of August 11, 2017.

Presented by: Rhonda Lewis, Annuity Marketing Services, 3368 Brentwood Dr, 3368 Brentwood Dr, Baton Rouge, LA 70809 Phone: 225-930-0315 Email: missy.cobb@annuitymarketing.com